



Northumberland
County Council

Haydon Parish Neighbourhood Plan

Referendum Information Statement (Including Information for Voters)

**Statement Published:
Referendum Date:**

**XX May 2022
Thursday 30 June 2022**

About the Referendum

On **30 June 2022**, there will be a referendum on a neighbourhood plan for your area. This statement explains more about the referendum that is going to take place and how you can take part in it. This statement provides information about:

- The referendum and how you can take part;
- The planning system in England and the development plan;
- Neighbourhood plans;
- The Neighbourhood Area;
- The Haydon Parish Neighbourhood Plan

Referendum on the Neighbourhood Plan

A referendum asks you to vote 'yes' or 'no' to a question.

For this referendum you will receive a ballot paper with this question:

“Do you want Northumberland County Council and Northumberland National Park Authority to use the neighbourhood plan for Haydon Parish Neighbourhood Area to help decide planning applications in the neighbourhood area?”

How do I vote in the referendum?

You vote by putting a cross (X) in the 'Yes' or 'No' box on your ballot paper.

You should put a cross in only **one** box or your vote will not be counted.

If more people vote 'Yes' than 'No' in this referendum, then Northumberland County Council and Northumberland National Park Authority will use the Haydon Parish Neighbourhood Plan to help decide planning applications in the Parish of Haydon.

If more people vote 'No' than 'Yes', then planning applications will continue to be decided without using the Haydon Parish Neighbourhood Plan. Instead planning applications would be decided using policies in the Northumberland Local Plan and the Northumberland National Park Local Plan.

What is the Development Plan?

In England, decisions on planning applications are made by local planning authorities. Those decisions must be made in accordance with the development plan unless material considerations indicate otherwise. The development plan is a set of documents that contain policies for the development and use of land in a local planning authority area. Northumberland County Council is the local planning authority for Northumberland with the exception of areas covered by the Northumberland National Park where the Northumberland National Park Authority is the local planning authority.

What is Neighbourhood Planning?

Neighbourhood planning powers were introduced in the Localism Act in 2011. Their aim is to help local communities play a direct role in planning the areas in which they live and work. Local communities prepare neighbourhood plans which show how the community wants land to be used and developed in its area. When a neighbourhood plan passes a local referendum, it will become part of the development plan for that neighbourhood area and must be used to help in making decisions on planning applications in that area.

Who can prepare a Neighbourhood Plan?

Where town or parish councils exist, they are the only organisations that can start the work of preparing a neighbourhood plan.

In this case, the Haydon Parish Neighbourhood Plan has been prepared by Haydon Parish Council.

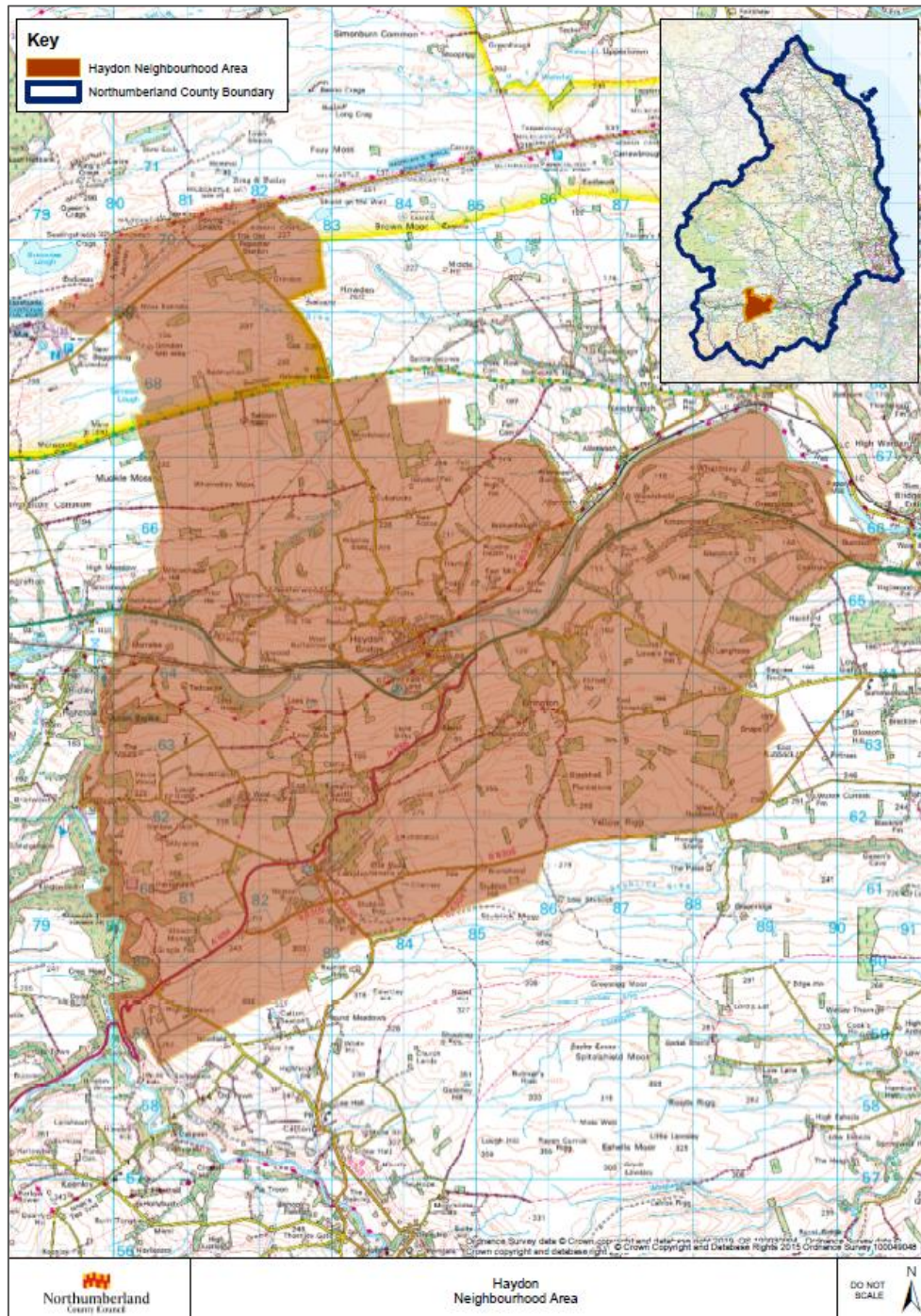
What is a neighbourhood area?

Neighbourhood areas are areas defined for the purpose of neighbourhood planning. Neighbourhood plans can only be created in formally designated neighbourhood areas. A neighbourhood area can cover single streets or large urban or rural areas.

The boundaries of a neighbourhood area are proposed by town or parish councils. This is done by formal application to the local planning authority who will make the decision about designating a neighbourhood area.

Haydon Parish Neighbourhood Area

Neighbourhood areas will normally follow parish boundaries or groups of parishes. The boundary of the Haydon Parish Neighbourhood Area was approved by Northumberland County Council and by the Northumberland National Park Authority. The Referendum area is identified on the map in this Information Statement. The area comprises the whole of the civil parish of Haydon Parish. The Referendum area is identical to the area designated as the Haydon Parish Neighbourhood Area.



Referendum expenses

Expenses can be incurred by an individual or body organising a campaign during the period of the referendum for referendum purposes. There is a limit to the amount that campaigners can spend on their advertising for the referendum.

The Referendum expenses limit¹ that will apply in relation to the Haydon Parish Neighbourhood Plan Referendum is **£2,472.09** to each campaign organiser. The number of persons entitled to vote in the Referendum by reference to which the limit has been calculated is **1,866** (as at 1 December 2021)

Specified documents to be published before Referendum

The County Council and the Northumberland National Park Authority are required to make available a number of documents relevant to holding the Referendum. These are called the ***Specified Documents***.

The specified documents are:

- Haydon Parish Neighbourhood Plan: Referendum Version;
- Report of the independent examiner (received 11 March 2022);
- Summary of the representations submitted to the independent examiner;
- Statement by the local planning authority that the draft plan meets the basic conditions (*The Regulation 18 Decision Statement*); and a
- Statement that sets out general information as to town and country planning including neighbourhood planning and the referendum (*Referendum Information Statement including Information for Voters*)

Following current government advice on '[living safely with Covid-19](#)', anyone wishing to view the specified documents is encouraged to do so online through the following web link: www.northumberland.gov.uk/ourplan

Where people entitled to vote are genuinely unable to access these documents online a printed copy may be made available on request.

Requests for printed copies of the specified documents must be made either by email or by telephone.

Email: neighbourhoodplanning@northumberland.gov.uk
Phone: 0345 600 6400

¹ As set out in Regulation 6 of The Neighbourhood Planning (Referendums) Regulations 2012.

Haydon Parish Council may make alternative arrangements for providing access to the specified documents. Anyone wishing to discuss those arrangements should contact the Parish Council Clerk, Carole McGivern by telephone on 07543 912 113 or by email at haydonbridgeparish@gmail.com

Can I vote?

You can vote in the referendum if you live in the Parish of Haydon Parish and:

- You are registered to vote in local council elections; and
- You are 18 years of age or over on **30 June 2022**.

You have to be registered to vote by **14 June 2022** to vote in the referendum. You can check if you are registered to vote by calling our Helpline on 01670 624844.

The referendum will be conducted based on procedures which are similar to those used at local government elections.

Ways of voting

There are three ways of voting:

In person on Thursday 30 June 2022:

- At your local polling station. It is easy and a member of staff will always help if you are not sure what to do.
- The polling stations are at:
 - Haydon Bridge Community Centre, Ratcliffe Road, Haydon Bridge, NE47 6ET
 - Langley Village Hall, Langley on Tyne, Hexham, NE47 5LA
- The polling stations are open from **7am to 10pm**.
- You will receive a poll card for this referendum. If you do not receive your poll card, you can contact our Helpline on 01670 624844, or email us on elections@northumberland.gov.uk.

By post:

- If you have a postal vote already, you will receive a poll card confirming this.

- To vote by post, you will need to complete an application form and send it to the Electoral Registration Officer to arrive **by 5pm on 15 June 2022** at this address:

Northumberland County Council
County Hall
Morpeth
Northumberland
NE61 2EF

- Postal votes can be sent overseas but you need to think about whether you will have time to receive and return your completed postal vote.
- You should receive your postal vote about a week before polling day. If it doesn't arrive in time, you can ask for a replacement **up to 5pm on 30 June 2022** by contacting our Helpline on 01670 624844.

By proxy:

- If you have a proxy vote already you will receive a poll card confirming this.
- If you can't get to the polling station and don't wish to vote by post you may be able to vote by proxy. This means allowing somebody you trust to vote on your behalf.
- To vote by proxy, you will need to complete an application form and send it to the Electoral Registration Officer to arrive **by 5pm on 22 June 2022** at this address:

Northumberland County Council
County Hall
Morpeth
Northumberland
NE61 2EF

- When you apply for a proxy vote, you must say why you cannot vote in person.
- Anyone can be your proxy as long as they are eligible to vote and are willing to vote on your behalf. You will have to tell them how you want to vote.

Postal and proxy vote application forms are available from our Helpline on 01670 624844 or by emailing elections@northumberland.gov.uk You can also download forms from Northumberland County Council's website.

Postal vote application details can be found here:

<https://www.electoralcommission.org.uk/i-am-a/voter/apply-vote-post>

Proxy vote application details can be found here:

<https://www.electoralcommission.org.uk/i-am-a/voter/how-vote-proxy>

Am I registered to vote?

If you're not registered, you won't be able to vote. You can check if you are registered by calling our Helpline on 01670 624844.

If you are not registered to vote, you will need to submit an application to register. You can do this online at www.gov.uk/register-to-vote

Alternatively, you can contact Electoral Services on the helpline number above to apply by telephone or to be sent with a paper application form.

However you choose to submit your application, you will need your National Insurance Number.

How to find out more

Further general information on neighbourhood planning, including documents relating to the Haydon Parish Neighbourhood Plan, can be found on the County Council's website at: <http://www.northumberland.gov.uk/ourplan>

For queries about planning issues and neighbourhood planning in general, please contact Northumberland County Council's Neighbourhood Planning Team by email: neighbourhoodplanning@northumberland.gov.uk

For more information about voting and the arrangements for this referendum, please contact our Helpline on 01670 624844 or email elections@northumberland.gov.uk